

# INDEXING RING ROTARY TABLE **FIBROTOR RT.0750**

**NEW  
2017**



# HIGHLY EFFICIENT INDEXING RING ROTARY TABLES FOR ASSEMBLY AUTOMATION

---

**Modern, high performance assembly plants for the automotive, electronics and consumer goods industries require precise and process safe drive components that are also economical while leaving sufficient room for creative drive concepts. The FIBROTOR RT.0750 ring style rotary table was specifically designed based on these viewpoints.**

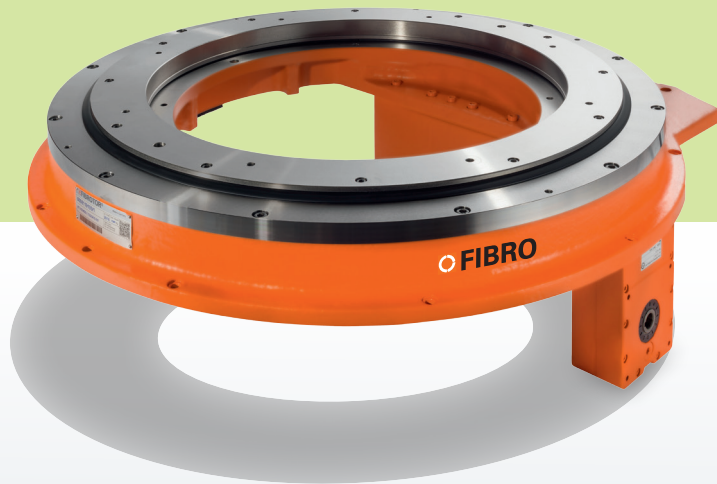
The price attractive ring drive combines an innovative bearing concept with cost optimised construction. In comparison with conventional rotary tables with a light weight construction, the considerably larger bearing doubles the maximum tipping moment and triples the maximum loading without increasing the total investment cost for the rotary table.

The RT.0750 has an inner diameter of 440 mm, the maximum axial force is rated at 5,000 N, the maximum radial force at 8,000 N and the maximum tipping moment at 2,250 Nm. For applications that do not fully utilize these maximum values, the robust bearing pays off in the form of an extended operating life. The normal operating life is 20,000 hours MTTF (Mean Time To Failure).

# FIBROTOR RT.0750

## ADVANTAGES OF THE NEW DESIGN

- Short indexing times
- Soft acceleration
- Indexing precision of +/- 12 arc seconds
- Sealed table top in the standard version  
Low profile - overall height 95 mm  
Large open center
- Highly efficient cam drive:  
20% energy savings
- Short E-stop times
- Best price vs. performance ratio
- Optionally offered with frequency inverters from SEW or Siemens with FIBRO software. These frequency drives are preprogrammed with the sequencing steps for a clockwise, counter-clockwise or pendulum operation, soft start, fast or creep speed and indexing time optimisation.
- Available in 11 fixed divisions from 4 to 36 and as the programmable FIBROTOR RT.NC.0750 rotary table for infinitely variable positioning.



Roto**Motion**

**NEW EFFICIENCY.** <sup>20+</sup>  
MORE POWER. LESS COSTS.

## THE COMPANY FIBRO

**FIBRO GmbH** from Weinsberg, Germany, is a pioneer among rotary table manufacturers and offers the world's most extensive rotary table programme from a single source with more than 150 types of rotary tables. The rotary tables are used as swiv-

elling or positioning axes and as workpiece carriers in highly productive machine tools, assembly and production systems. The greatest possible standardisation of the individual series also makes the company an interesting partner with regard to

cost aspects. Numerous projects in various industries around the globe prove how strongly customers benefit from the high solution competence and worldwide service network of the rotary table specialists from Weinsberg.

## FIBRO GMBH

Rotary Table Division  
Weidachstraße 41-43  
D-74189 Weinsberg  
**T** +49 7134 73-0  
**F** +49 7134 73-218  
info@fibro.de  
www.fibro.com

## A COMPANY OF THE LÄPPLE GROUP

- **LÄPPLE AUTOMOTIVE**
- **FIBRO**
- **FIBRO LÄPPLE TECHNOLOGY**
- **LÄPPLE AUS- UND WEITERBILDUNG**

## BRANCHES

### FIBRO France SARL

Département Plateaux Diviseurs  
26 Avenue de l'Europe  
FR-67300 Schiltigheim  
**T** +33 390 204041  
**F** +33 388 810829  
info@fibro.fr

### FIBRO Inc.

Business Area Rotary Tables  
139 Harrison Avenue  
US-Rockford, IL 61104  
**T** +1 815 2291300  
**F** +1 815 2291303  
info@fibroinc.com

### FIBRO ASIA PTE. Ltd.

9 Changi South Street 3, #07-04  
Singapore 486361  
**T** +65 65 439963  
**F** +65 65 439962  
info@fibro-asia.com

### FIBRO INDIA PRECISION PRODUCTS PVT. LTD.

#### Regd. Office & Works

Plot: A-55, Phase II,  
Chakan MIDC, Taluka Khed  
410501 Pune  
**T** +91 2135 33 88 00  
**F** +91 2135 33 88 88  
info@fibro-india.com

### FIBRO (SHANGHAI) STANDARD PARTS CO., LTD.

2nd Floor, Building 30, No. 188,  
He Dan Road, (Shanghai)  
Pilot Free Trade Zone  
200131 Shanghai  
**T** +86 021 6083 1589  
**F** +86 021 6083 1599  
info@fibro.cn