

Shown: ACL-201A, WA-502, ACL-21A

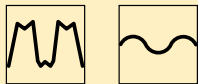


► Enerpac accumulators supply auxiliary pressure to dampen shock loads or to compensate pressure drop in applications where system pressure needs to be maintained.

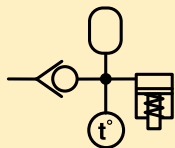
Accumulator applications:

- Energy storage
- Circuit pulsation dampening
- Thermal expansion compensation

Pulse dampening



Thermal expansion



■ ACBS-202 Accumulator package used to maintain pressure on a machine tool fixture.



Accumulators

...maintain circuit pressure

- Ideal for high frequency and rapid discharge applications
- ACL series are pre-charged to 100 bar
- Corrosion resistant bodies on ACL series
- Spring actuated accumulator for ACM-1
- High energy storage capacity in a compact package
- WA accumulators are piston type
- ACL accumulators are diaphragm type
- ACM accumulators use internal spring.

Product selection

Operating pressure	Model number	Max. rated oil volume	Gas volume	Pre-charged nitrogen pressure	Usable oil capacity
bar		cm ³	cm ³	bar	cm ³ at 350 bar
▼ Pre-charged accumulators					
0-210	ACM-1	1,6	–	–	–
100-350	ACL-22A	14,7	20,0	100	8,7
100-350	ACL-202A	126,2	169,9	100	73,9
100-350	ACL-502A	337,6	450,0	100	196,6
▼ Uncharged accumulators					
0-350 ¹⁾	WA-502	41,0	41,0	–	41,0
0-350 ¹⁾	WA-5010	163,9	163,9	–	122,9

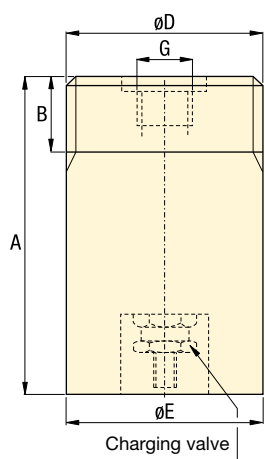
¹⁾ See pre-charge chart on page 163 for hydraulic operating pressures.

Recommended pre-charge

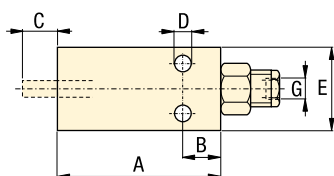
Operating pressure bar	Model number	Nitrogen pressure bar	Usable oil capacity ¹⁾ cm ³
0 - 70	WA-502	35	24,6
70 - 210	WA-502	70	32,8
210 - 350	WA-502	80	41,0
0 - 70	WA-5010	35	90,1
70 - 210	WA-5010	70	106,5
210 - 350	WA-5010	80	190,5

¹⁾ At maximum operating pressure.

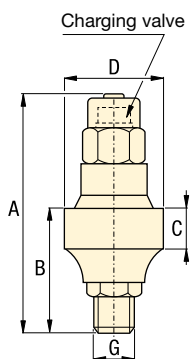
WA-502, WA-5010



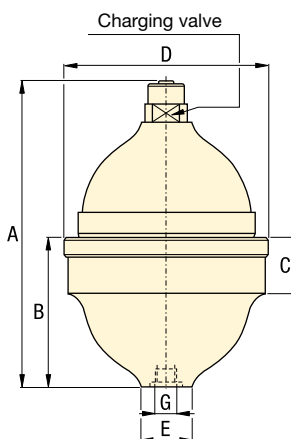
ACM-1



ACL-22A



ACL-202A, 502A



Product dimensions in mm []

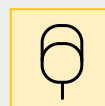
Model number	A	B	C	D	E	F	G	Recommended charging tool	kg
▼ Pre-charged accumulators									
ACM-1	133	19	13	6,7	45	-	1/4"-27 NPTF	-	1,0
ACL-22A	91	37	18	42,9	23	-	G1/4"	WAT-2	0,5
ACL-202A	137	69	29	84,5	29	-	G1/4"	WAT-2	1,2
ACL-502A	171	89	35	114,0	40	-	G3/8"	WAT-2	2,8
▼ Uncharged accumulators									
WA-502	119	30	-	2 3/4" -16 UN	70	-	SAE #8	WAT-1	3,2
WA-5010	181	30	-	2 3/4" -16 UN	70	-	SAE #8	WAT-1	5,2

Pressure: 0 - 350 bar

Oil volume: 1,6 - 337,6 cm³

Gas volume: 20 - 450 cm³

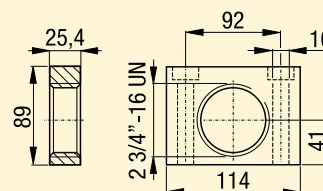
- E** Acumuladores
- F** Accumulateurs
- D** Druckspeicher



Options

AW-50 Mounting block

For WA-series accumulators.



Hydraulic oil

193 ▶



Fittings

194 ▶

