

# Activator wand and booster

Shown: RA-1061, B-81



## B and RA-series

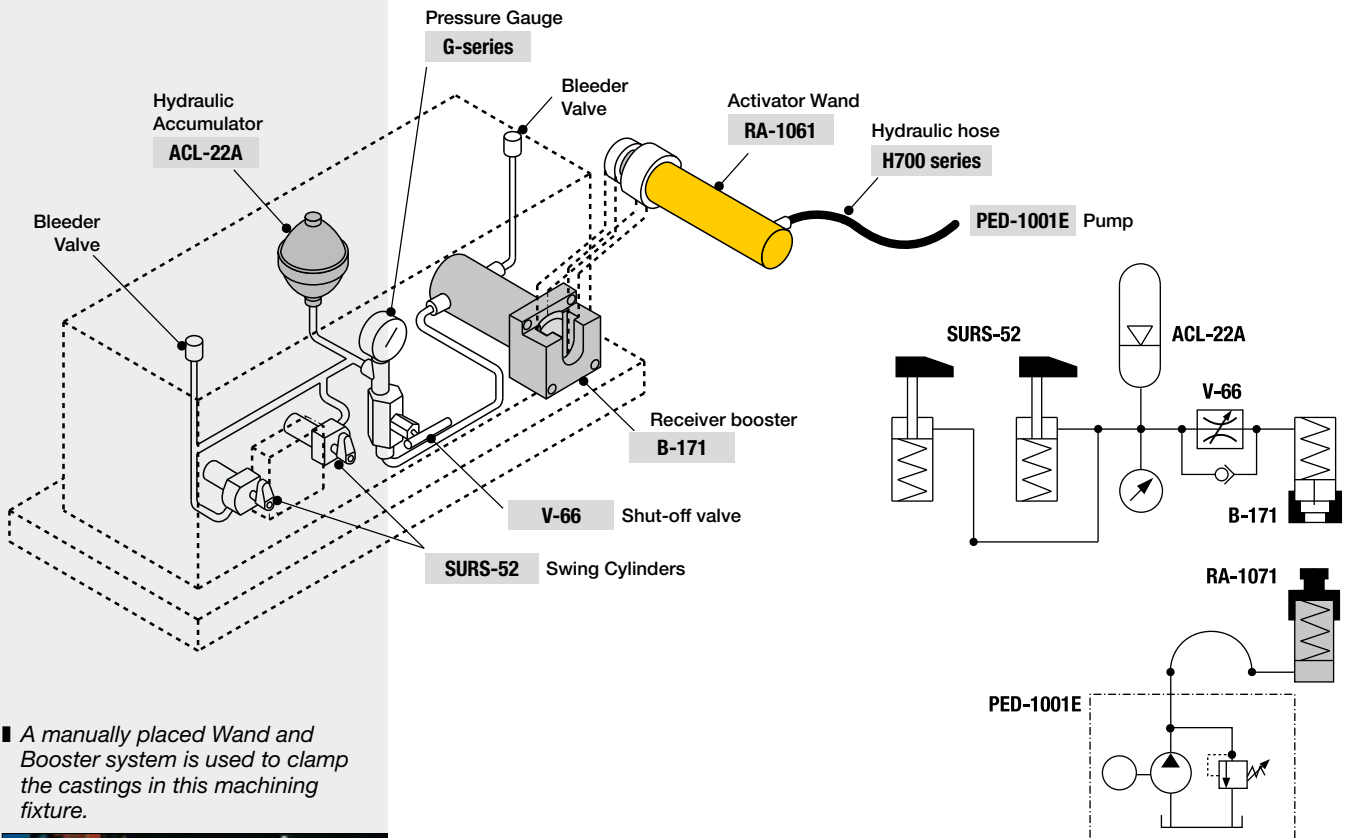
Mechanical energy transfer system uses external cylinder to operate receiver booster.

## Contamination resistant closed hydraulic system

- No-leak palletized system, eliminates oil loss at connection point
- Closed design prevents machining chips and coolant from entering the hydraulic circuit
- Booster can be mounted in either horizontal or vertical position for flexible fixture design.

## Hydraulic system schematics

The Activator Wand RA-1061 is placed into the receiver booster B-81 or B-171. The mechanical transfer of force from the activator wand plunger to the booster piston provides oil flow to the system.

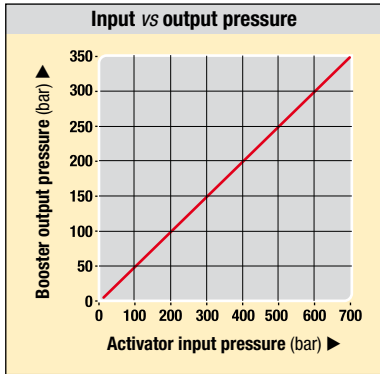


■ A manually placed Wand and Booster system is used to clamp the castings in this machining fixture.



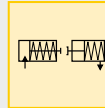
## Product selection

Pressure ratio	Oil flow ratio	Oil volume per stroke cm <sup>3</sup>	Stroke mm	Model number	Effective area cm <sup>2</sup>	Operating pressure bar	kg
<b>▼ Receiver booster</b>							
2 : 1	1,75 : 1	132,7	51,8	<b>B-81</b>	25,7	30 - 350	5,7
2 : 1	1,75 : 1	280,2	109,2	<b>B-171</b>	25,7	30 - 350	7,1
<b>▼ Activator wand</b>							
-	-	162,2	112,7	<b>RA-1061</b>	14,4	60 - 700	5,1



- Ratio: 2 : 1
- Stroke: 51,8 - 112,7 mm
- Pressure: 30 - 350 bar

- E** Multiplicadores
- F** Multiplicateur
- D** Betätigungszyylinder und Druckverstärker



**Options**

**Fittings**

194 ▶

**Hoses and couplers**

192 ▶

For 700 bar pumps, refer to the Enerpac Industrial Tools Catalog E327e.

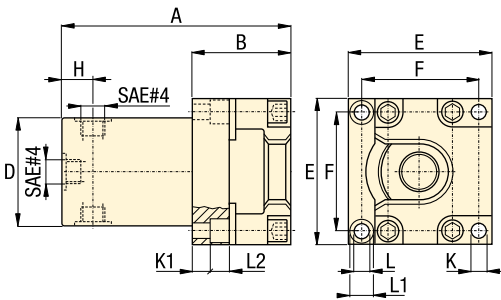
Existing fixtures with manual-connect single-acting circuits can be easily upgraded into the wand and booster.

**Important**

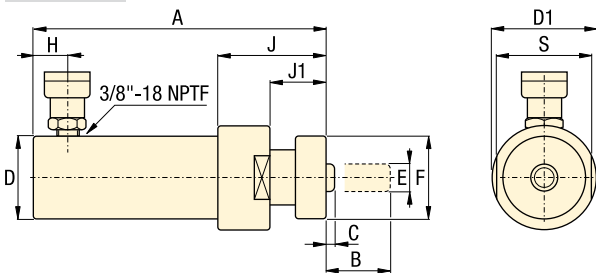
The activator wand has a 2 to 1 ratio of input pressure versus output force.

The booster output flow is 1,75 times the wand input flow.

**B-81, -171**



**RA-1061**



**Product dimensions** in mm [ ]

Model number	A	B	C	D	D1	E	F	H	J	J1	K	K1	L	L1	L2	S
<b>▼ Receiver booster</b>																
<b>B-81</b>	174,2	69,6	44,2	76,2	-	101,6	82,6	28,4	-	-	10,4	57,4	10,4	15,7	10,7	-
<b>B-171</b>	231,6	69,6	44,2	76,2	-	101,6	82,6	28,4	-	-	10,4	57,4	10,4	15,7	10,7	-
<b>▼ Activator wand</b>																
<b>RA-1061</b>	295,1	117,6	4,8	57,2	76,2	19,1	58,9	19,1	76,7	38,9	-	-	-	-	-	69,9