

Pin-Type Hydraulic Flange Spreaders

▼ Shown: FS-56



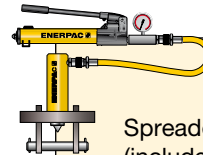
- Lightweight, ergonomic design for ease of use
- Adjustable jaw widths from 70 to 216 mm for a wide range of applications
- Single-acting, spring return RC-Series DUO cylinder for fast trouble-free operation.

FS Series



Capacity:
5 - 10 ton

Maximum Operating Pressure:
700 bar



Flange Spreader Sets

Both Hydraulic Flange Spreaders are available as sets (includes pump, tool, gauge, adaptor and hose) for your ordering convenience.

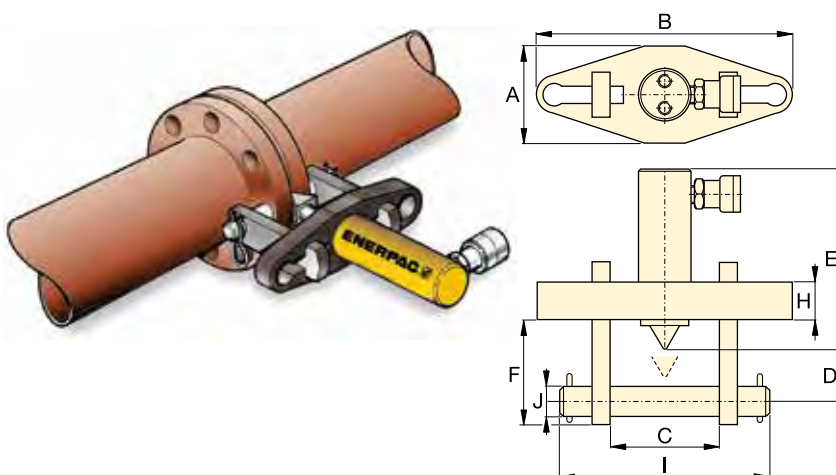
Pump Model Nr.	Spreader Model Nr.	Set Model Number
P-142	FS-56	STF-56H
P-392	FS-109	STF-109H
PATG-1102N	FS-109	STF-109A



Wedge Spreaders

Friction-free, smooth and parallel wedge movement with unique interlock wedge design. Eliminates flange damage and risk of spreading arm failure.

Page: 58



Flange Spreader Matching Chart

ASA Rating (bar)	Pipe Size (mm)	
	FS-56	FS-109
10	127 - 508	558 - 1066
20	63 - 355	406 - 711
27	63 - 304	355 - 609
35	63 - 254	304 - 508
62	12 - 152	203 - 406
103	12 - 88	101 - 203
172	12 - 63	76 - 101

Max. Flange Thickness (mm)	Stud Size (mm)	Standard Wedge (mm)	Capacity (ton)	Stroke (mm)	Oil Cap. (cm ³)	Model Number	Dimensions (mm)										Weight (kg)
							A	B	C		D	E	F	H	I	J	
									Min.	Max.							
2 x 57	19 - 28	3 - 28	5	38	24,6	FS-56	76	209	70	155	32	196	88	25	206	19	11,5
2 x 92	31 - 41	3 - 28	10	54	78,7	FS-109	108	279	104	216	50	152	114	38	273	31	18,1