

L1672 Rev. A 02/98

**IMPORTANT RECEIVING INSTRUCTIONS:** Visually inspect all components for shipping damage. If any shipping damage is found, notify carrier at once. Shipping damage is NOT covered by warranty. The carrier is responsible for all repair or replacement cost resulting from damage in shipment.

## ***SAFETY FIRST***

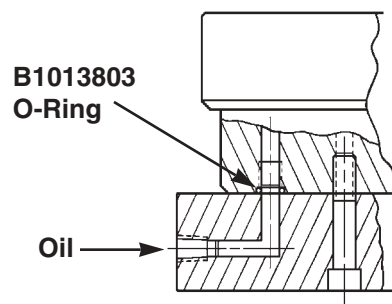
Carefully plan your system by selecting components designed to perform the intended operation and which will adequately perform with existing equipment. Always check the product limitations regarding pressure ranges, load capacities and set-up requirements. The system operating pressure must not exceed the pressure rating of the lowest rated component in the system. Read all CAUTIONS, WARNINGS, and INSTRUCTIONS included with, or attached to, each product. Follow all safety precautions to avoid personal injury or property damage during the system operation. **ENERPAC CANNOT BE RESPONSIBLE FOR DAMAGE OR INJURY RESULTING FROM UNSAFE USE OF PRODUCT, LACK OF MAINTENANCE OR INCORRECT PRODUCT AND SYSTEM APPLICATION.**

Contact ENERPAC when in doubt as to safety precautions, or applications.

### **Installation**

These units can be mounted in any direction. All models except CY1254-25 can be mounted on a manifold (as shown at right). When manifold mounting, be sure fixture can withstand 3,000 psi working pressure. There are two tapped holes in the cylinder for mounting purposes. Use -20 socket head cap screws for CY1254-25; -16 socket head cap screws for CY2129-5, CY2129-25, and CY2754-5; and -14 socket head cap screws for CY3500-19. Use -27 NPTF male connector to connect hydraulic pressure line to the unit, or mount on a manifold. Tighten pressure line at the valve, but loosely thread onto cylinder fitting. Reduce hydraulic pressure to lowest possible setting, and activate valve to send fluid to the cylinder. When hydraulic fluid begins to leak from the cylinder connection, completely tighten pressure line. To further bleed the system, cycle cylinder several times with cylinder hydraulic connection facing up and with the cylinder lower than the pump. This will allow any trapped air to return to the pump reservoir.

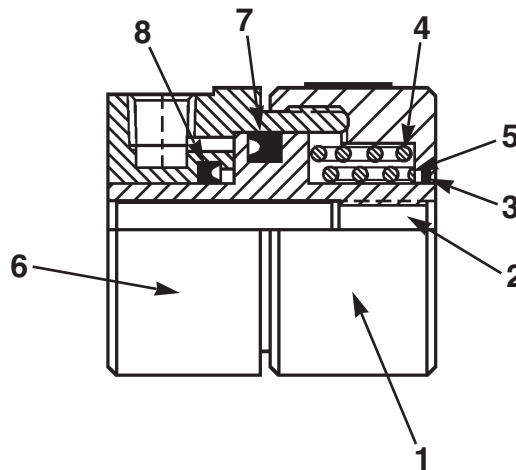
All CY series hollow cylinders have a **maximum operating pressure of 3000 psi.**



**Typical Manifold Mounting**



These cylinders are assembled under slight spring pressure. Use care when disassembling cylinder head cap (item 1) from cylinder body (item 6).



### Parts List

Item	Part Number CY1254-25	Part Number CY2129-5	Part Number CY2129-25	Part Number CY2754-5	Part Number CY3500-19	Qty.	Description
1	406076	406072	406072	406074	406039	1	Cylinder Head Cap
2	406075	4060712	4060711	406073	406038	1	Piston
3	★ B1221503	★ B1230503	★ B1230503	★ B1232503	★ B1265503	1	O-Ring
4	401739	401887	401887	401888	406053	1	Spring
5	401899	401835	401835	401889	-	1	Spring
6	406068	406070	406069	406067	406037	1	Cylinder Body
7	★ 403034	★ 403033	★ 403033	★ 403031	★ B1338513	1	Seal
8	★ 403035	★ 403032	★ 403032	★ CS370041	★ 402021	1	Seal
9	-	A1007245	A1007245	A1007245	A1007245	1	Flush Plug
	CY125425K	CY2129K	CY2129K	CY27545K	CY350019K		Repair Kit

★ Indicates items included in the above mentioned Repair Kits.

**Australia**  
ENERPAC  
Applied Power Australia, Ltd.  
P.O. Box 261 Regents Park  
Sydney, N.S.W. 2143  
Tel: (61) (2) 9743 8988  
Fax: (61) (2) 9743 8648

**CIS**  
Applied Power Moscow  
Leninsky Prospekt 95A  
117313 Moscow, Russia  
Tel: (7)(95) 956 5090  
Fax: (7)(95) 936 2006

**France, Switzerland,  
Turkey, Greece, Africa,  
Middle East**  
ENERPAC S.A.  
B.P.200, Parc d'Activités  
du Moulin de Massy  
1 rue du Saule Trapu,  
F-91882 Massy CEDEX  
(Paris) France  
Tel: (33) 1 60 13 68 68  
Fax: (33) 1 69 20 37 50

**Germany, Scandinavia,  
Eastern Europe, Austria,  
Switzerland**  
ENERPAC  
Applied Power GmbH  
P.O. Box 30 01 13  
Mündelheimer Weg 51  
40472 Düsseldorf 30  
Germany  
Tel: (49) (211) 47 14 90  
Fax: (49) (211) 4714 940

**Holland, Belgium,  
and Luxemburg**  
ENERPAC B.V.  
P.O. Box 269, Storkstraat 25  
3900AG Veenendaal  
Holland  
Tel: (31) (318) 535911  
Fax: (31) (318) 525613

**Hong Kong**  
ENERPAC  
Applied Power Asia PTE LTD.  
Room No. 907, Workingberg  
Commercial Building  
41-47 Marble Road,  
North Point  
Tel: (852) 2561-6285  
Fax: (852) 2561-6772

**India**  
ENERPAC  
Hydraulics (India) Pvt Ltd.  
203 Vardhaman Chambers  
Plot #84, Sector 17  
Vashi, New Bombay 400 705  
Maharashtra, India  
Tel: 91-22-7632061  
Fax: 91-22-7670309

**Italy**  
ENERPAC  
Applied Power Italiana S.p.A.  
Via Canova, 4  
20094 Corsico (Milano)  
Italy  
Tel: 39 2 45 82 741  
Fax: 39 2 48 60 12 88

**Japan**  
Applied Power Japan LTD  
10-17 Sasame Kita-cho  
Toda-City  
Saitama 335,  
Japan  
Tel: 81 048 422 2251  
Telex: J26275  
Fax: 81 048 422 0596

**Mexico**  
ENERPAC  
Applied Power Mexico  
Av. Principal La Paz #100  
Fracc. Industrial La Paz  
42092 Pachuca, Hidalgo, Mexico  
Tel: (52) 771 33700  
Fax: (52) 771 83800

**Singapore**  
Applied Power Asia PTE LTD.  
47 Jalan Pemimpin #01-02 &  
#01-03 Sin Cheong Building  
Singapore 577200  
Tel: (65) 258 1677  
Fax: (65) 258 2847

**South Korea**  
ENERPAC  
Applied Power Korea Ltd.  
163-12, Dodang-Dong  
Wonmi-ku, Buchun-Shi,  
Kyunggi-Do  
Republic of Korea  
Tel: (82) (32) 675 0836  
Fax: (82) (32) 675 3002

**Spain, Portugal**  
ENERPAC  
Applied Power International, S.A.  
Calle de la Imprenta, 7  
Poligono Industrial  
28100 Acobendas (Madrid)  
Spain  
Tel: (34) 1 661 11 25  
Fax: (34) 1 661 47 89

**United Kingdom, Ireland**  
ENERPAC Ltd. Unit 3  
Colemeadow Road  
North Moons Moat  
Redditch, Worcester B98 9BP  
England  
Tel: 44 01527 598 900  
Fax: 44 01527 585 500

**United States, Canada,  
Latin America and  
Caribbean**  
ENERPAC  
13000 West Silver Spring Drive  
Butler, Wisconsin 53007, USA  
Tel: (414) 781-6600  
1-800-433-2766 (End User)  
1-800-558-0530 (Distributor)  
Fax: (414) 781-1049

**Canada**  
Tel: 1-800-426-4129 (End User)  
Tel: 1-800-426-2284 (Distributor)

**Latin America and Caribbean**  
Tel: (414) 781-6600 ext. 263  
Fax: (414) 781-5561



All Enerpac products are guaranteed against defects in workmanship and materials for as long as you own them. Under this guarantee, free repair or replacement will be made to your satisfaction.

For prompt service, contact your Authorized Enerpac Service Center or call toll free:

In U.S.A. 1-800-558-0530

In Canada 1-800-426-2284