

IMPORTANT RECEIVING INSTRUCTIONS

Visually inspect all components for shipping damage. If any shipping damage is found, notify carrier at once. Shipping damage is NOT covered by warranty. The carrier is responsible for all repair or replacement costs resulting from damage in shipment.

SAFETY INFORMATION

To avoid personal injury or property damage during system operation, read and follow all CAUTIONS, WARNINGS, and INSTRUCTIONS included with or attached to each product. ENERPAC CANNOT BE RESPONSIBLE FOR DAMAGE OR INJURY RESULTING FROM UNSAFE USE OF PRODUCT, LACK OF MAINTENANCE, OR INCORRECT PRODUCT AND SYSTEM APPLICATION. Contact Enerpac when in doubt about safety precautions or applications.



WARNING

The system operating pressure must not exceed the pressure rating of the lowest rated component in the system.

DESCRIPTION

MV-72 and MVM-72 check valves are used to hold the load in the event of a loss of system pressure. They are normally used with double-acting systems, in which the pilot port receiving signal pressure, allowing the valve to open.

SPECIFICATIONS

Model Number	MV-72	MVM-72
Max. Operating Pressure	5,000 psi [350 bar]	5,000 psi [350 bar]
Pilot Ratio	7:1	7:1
Flow Capacity	10 GPM [37.85 l/min.]	10 GPM [37.85 l/min.]
Ports	.250-19 BSPP	manifold mounted

INSTALLATION

Mounting

MV-72

Mount the MV-72 in any position, using the 0.281 in. [7,14 mm] diameter mounting hole.

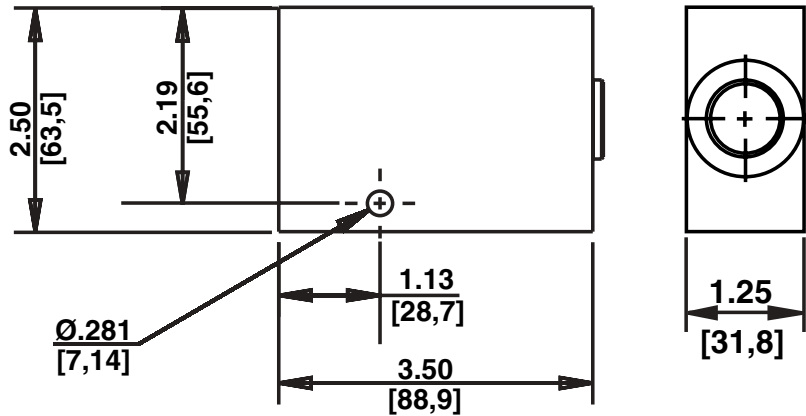


Figure 2

MVM-72

MVM-72 is a manifold mount model. See page 3 for port locations.

To prevent leakage, manifold mounting surface should have a flatness within .004 in. [.10 mm] and surface roughness average (R_a) not to exceed 63 μm . [1,6 μm]. Prior to mounting the valve, lubricate the o-rings installed in the counterbores around the ports. Mount the MVM-72 on the manifold using the four M6 x 45,0 mounting screws shipped with the valve. Torque mounting screws to 16-18 ft-lbs. [21,5 - 25 Nm].

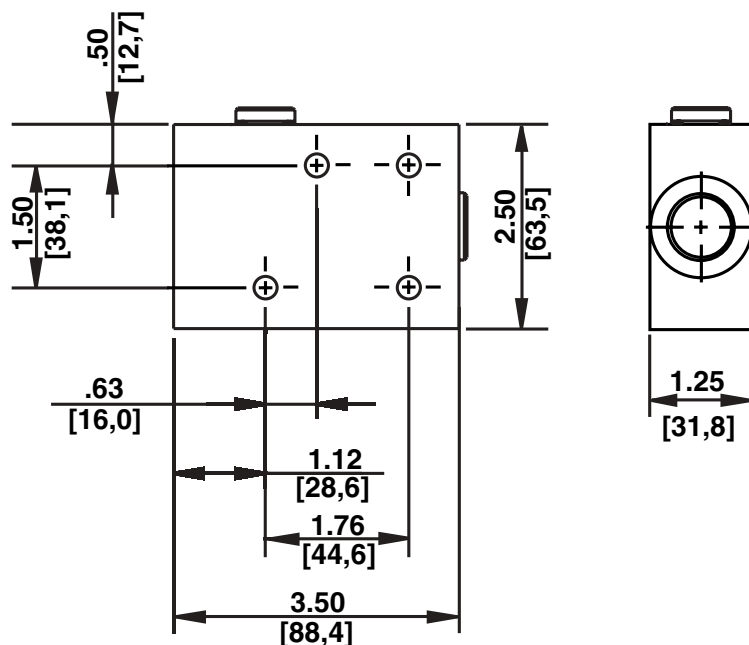


Figure 3

Hydraulic Connections

A typical system circuit and cut-away view for both valves are shown below.

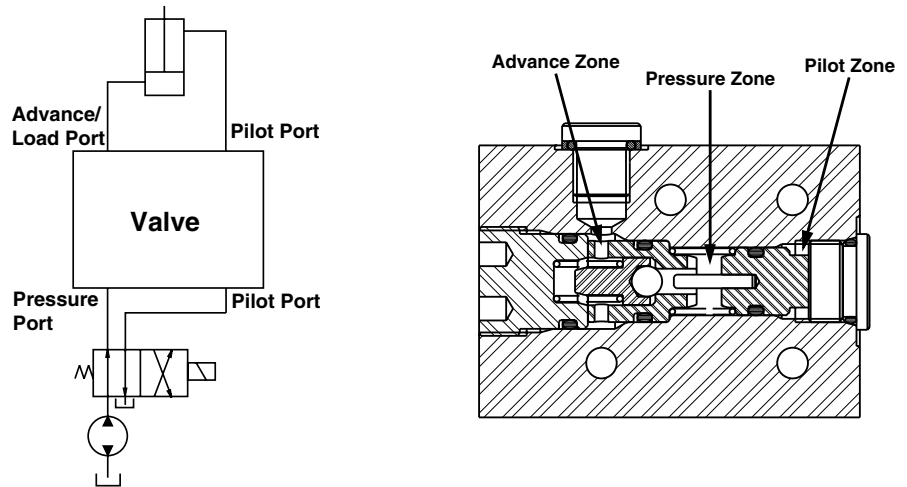


Figure 4

MV-72

Valve ports are identified in Figure 5. Remove thread protectors. Remove plug from retract port for use in double-acting systems. Connect pressure and pilot ports to the pump. Connect advance and retract ports to the load.

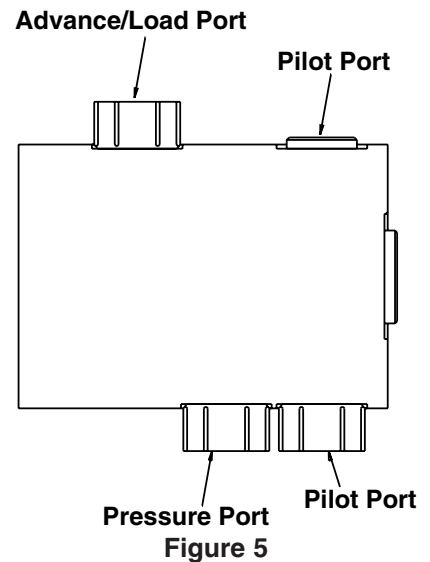


Figure 5

MVM-72

Valve ports are identified below.

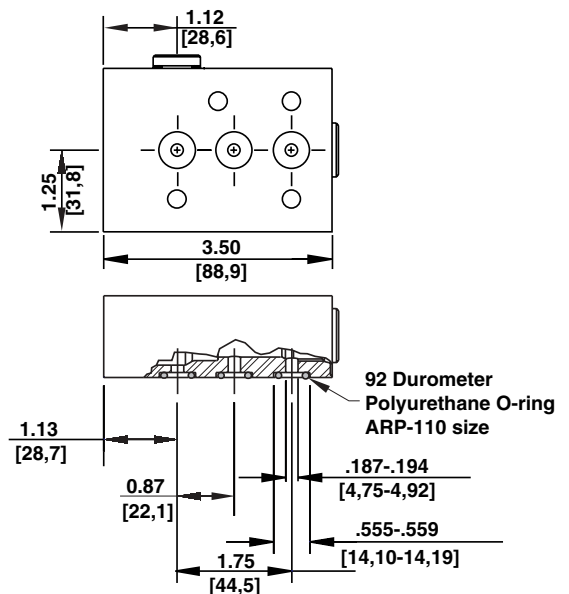
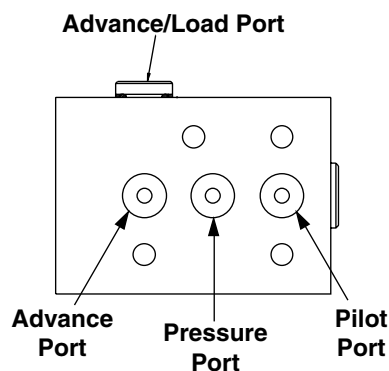


Figure 6

Enerpac Worldwide Locations

◆ e-mail: info@enerpac.com

◆ internet: www.enerpac.com

Australia

ENERPAC, Applied Power Australia Ltd.
Block V Unit 3
Regents Park Estate
391 Park Road
Regents Park NSW 2143
(P.O. Box 261) Australia
Tel: +61 297 438 988
Fax: +61 297 438 648

Canada

Applied Power Canada Ltd.
6615 Ordan Drive, Unit 14-15
Mississauga, Ontario L5T 1X2
Tel: +1 905 564 5749
Fax: +1 905 564 0305
Toll Free:
Tel: +1 800 268 4987
Fax: +1 800 461 2456

China

Shanghai Blackhawk
Machinery Co Ltd
15H Jinxuang Building
238 Nandan Road (E)
Shanghai, 200030
China
Tel: +86 21 5866 9099
Fax: +86 21 5866 7156

France, Turkey, Greece, Africa, Middle East

ENERPAC S.A.
B.P. 200
Parc d'Activités
du Moulin de Massy
F-91882 Massy CEDEX (Paris) France
Tel: +33 1 601 368 68
Fax: +33 1 692 037 50

Germany, Switzerland, Austria, Eastern Europe

ENERPAC
Applied Power GmbH
P.O. Box 300113
D-40401 Düsseldorf
Germany
Tel: +49 211 471 490
Fax: +49 211 471 49 28

The Netherlands, Belgium, Luxembourg, Sweden, Denmark, Norway, Finland

ENERPAC B.V.
Storkstraat 25 /
P.O. Box 269, 3900 AG Veenendaal
The Netherlands
Tel: +31 318 535 911
Fax: +31 318 525 613
+31 318 535 848

Hong Kong

ENERPAC
Room 907 Workingberg
Commercial Building
41-47 Marble Road
North Point
Tel: +852-2561 6295
Fax: +852-2561 6772

India

ENERPAC
Hydraulics Technology
(India) Pvt Ltd
Plot No. A-571
MIDC, TTC Industrial Area
Mahape-400 701
Navi Mumbai, India
Tel: +91 22 769 47 78
Fax: +91 22 769 84 73

Italy

ENERPAC
Applied Power Italiana S.p.A.
Via Canova 4
20094 Corsico (Milano)
Tel: +39 2 486 111 00
Fax: +39 2 486 012 88

Japan

Applied Power Japan Ltd.
10-17 Sasame
Kita-Machi
Toda-Shi,
Saitama #335
Tel: +81 048 421 2311
Fax: +81 048 421 8949

Mexico

ENERPAC Applied Power
Mexico S.A. de C.V.
Avenida Principal
La Paz #100
Fracc. Industrial La Paz
42084 Pachuca, Hidalgo
Tel: +52 771 337 00
Fax: +52 771 838 00

Singapore

Applied Power Asia
Pte Ltd
No. 8, Ang Mo Kio,
Industrial Park 2
#01-00
Singapore 569500
Thomson Road
P.O. Box 114
Singapore 915704
Tel: +65 484 51 08
Fax: +65 454 56 69

South Korea

ENERPAC
Applied Power Korea Ltd.
163-12 Dodang-Dong
Choong-Ku, Buchun-shi
Kyunggi-Do
Republic of Korea
Tel: +82 32 675 08 36
Fax: +82 32 675 30 02

Spain, Portugal

ENERPAC
Applied Power International S.A.
Avda. Camino de lo Cortao 21
San Sebastian de los Reyes
28709 Madrid
Spain
Tel: +34 91 661 11 25
Fax: +34 91 661 47 89

United Kingdom, Ireland

ENERPAC Limited
Unit 3, Colemeadow Road
North Moons Moat
Redditch
Worcester B98 9BP
United Kingdom
Tel: +44 01527 598 900
Fax: +44 01527 585 500

USA, Latin America and Caribbean

ENERPAC
P.O. Box 3241
6101 N. Baker Road
Milwaukee, WI 53209 USA
Tel: +1 262 781 6600
Fax: +1 262 781 1049

User inquiries:

+1 800 433 2766

Distributor inquiries/orders:

+1 800 558 0530

All Enerpac products are guaranteed against defects in workmanship and materials for as long as you own them.
For your nearest authorized Enerpac Service Center, visit us at www.enerpac.com