

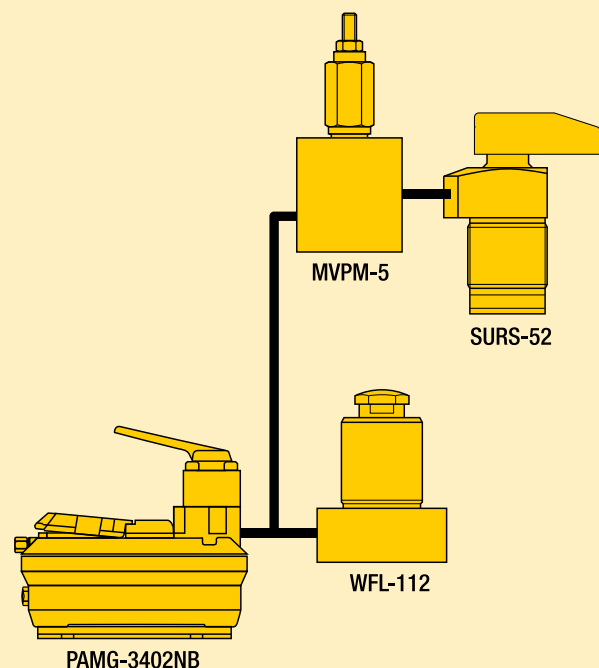
Turbo II air-hydraulic pumps *Application & selection*

Shown: PAMG-5402NB, PACG-3102NB, PATG-3102NB, PATG-5105NB



Turbo II air hydraulic pumps generate the hydraulic pressure you need using the air pressure you have available. The Air Saver Piston reduces air consumption and operating costs.

They are ideal for providing the power and speed desired in simple clamping circuits. Turbo II air-hydraulic pumps are best suited to medium and lower cycle applications. At only 75 dBA, the Turbo II series helps to keep noise level to a minimum.



Quick and powerful hydraulic supply in an economical air-powered unit

- On-demand stall-restart operation maintains system pressure, providing clamping security
- External adjustable pressure relief valve (behind sight glass)
- Internal pressure relief valve provides overload protection
- Reduced noise level to 75 dBA
- Operating air pressure: 4-8,5 bar – enables pump to start at low air pressure**
- Reinforced heavy-duty lightweight reservoir for applications in tough environments
- Five valve mounting options provide flexibility in setup and operation
- Fully serviceable air motor assembly.

Select the required output

3000 series

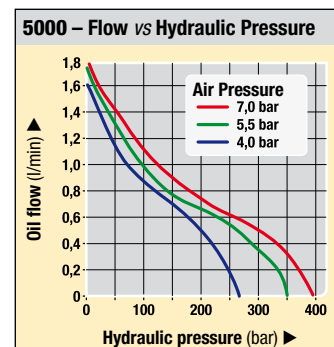
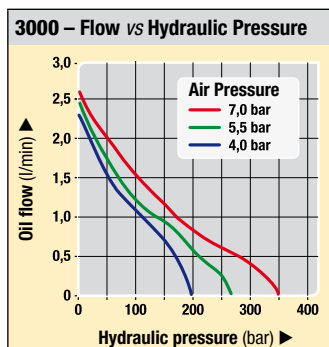
- Hydraulic to air ratio: 45:1

5000 series

- Hydraulic to air ratio: 60:1

** NOTE: From 4-8,5 bar air inlet pressure. Performance is significantly diminished below 4 bar. Performance may vary compared to listed values due to seal friction, internal pressure drops and manufacturing tolerances. Be sure to allow some flexibility on air inlet pressure.

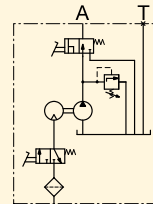
Output oil flow vs pressure



 **Select the required output:**

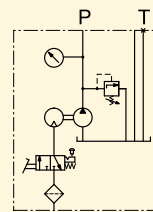
PATG series

- Momentary air inlet treadle for operation of single-acting cylinders
- Provides advance, hold and retract functions.



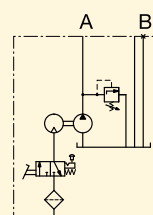
PACG series

- Momentary or continuous air inlet treadle
- A remote valve is required for operation of cylinders.



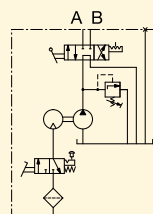
PASG series

- Momentary or continuous air inlet treadle
- Suitable for mounting any single- or double-acting valve with a D03 mounting configuration
- Available with multiple valve manifold (7,5 litre only).



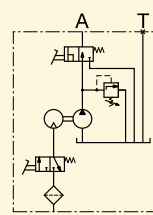
PAMG series

- Momentary or continuous air inlet treadle
- Manual 4-way, 3-position, tandem center valve for single- or double-acting operation.



PARG series

- Includes 5 m air pendant for remote control of single-acting cylinders
- Provides advance, hold and retract functions.



Oil Flow: 0,08 - 2,46 l/min

Pressure: 350 bar

Air: 340 l/min

Reservoir: 1,1 - 5,0 litres

- E** Bombas hidroneumáticas
- F** Pompes hydro-pneumatiques
- D** Lufthydraulische pumpen


 **Options**

Gauges and accessories

 190 ▶



Regulator-filter-lubricator

 106,158 ▶



 **Important**

For high cycle applications electric pumps are recommended.



PA-series *Dimensions & options*

Shown: PACG30S8S-WM10



▶ 1,9 litre Turbo Air Pump

The 1,9 litres Turbo pump models feature a drawn steel reservoir with an oil level sight glass. Choose from models with a P & T manifold for use with remote mount valves, a single station D03 manifold, the standard treadle or manual 4 way valve models. The PARG series uses an air operated pendant to control the pump functions. Or build a system pump with multiple Enerpac VP valve series, VP03 series or VSS/VST series D03 mount valves. The VMMD series D03 Manual valves can also be used.

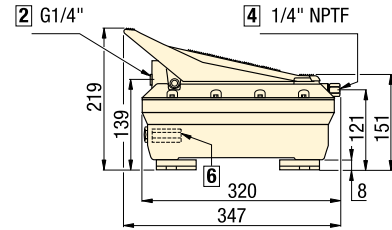
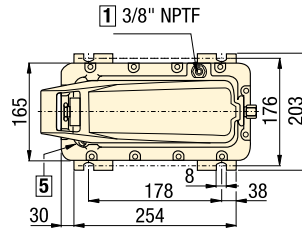
- 1 Auxiliary vent/tank fill port
- 2 Hydraulic output
- 3 Gauge mounting port
- 4 Swivel air input with filter
- 5 Filtered permanent tank vent
- 6 Adjustable pressure relief valve
- 7 Air pendant air input

🌐 Product selection

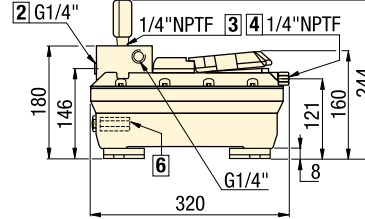
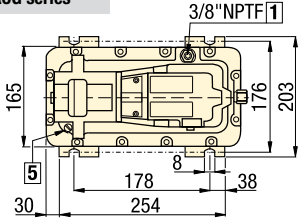
Description	Model numbers 3000 series	Model numbers 5000 series	Usable oil capacity ²⁾		Air pressure range	Air consumption	kg
			horizontal mount litres	vertical mount			
	2,46 l/min ¹⁾	1,64 l/min ¹⁾			bar	l/min	
▼ Factory supplied valves							
Hand/foot 3-way	PATG-3102NB	PATG-5102NB	2,1	1,1	1,7 - 8,6	340	8,6
Hand 4-way	PAMG-3402NB	PAMG-5402NB	2,1	1,1	1,7 - 8,6	340	11,3
Remote 3-way pendant	PARG-3102NB	PARG-5102NB	2,1	1,1	1,7 - 8,6	340	10,4
▼ User supplied valves							
Remote mount	PACG-3002SB	PACG-5002SB	2,1	1,1	1,7 - 8,6	340	8,6
Pump mount, single D03 Valve	PASG-3002SB	PASG-5002SB	2,1	1,1	1,7 - 8,6	340	8,6

🌐 1,9 litres reservoir (dimensions in mm)

PATG series

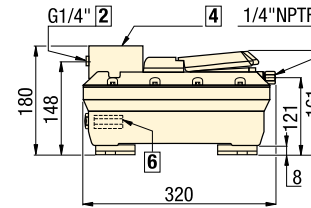
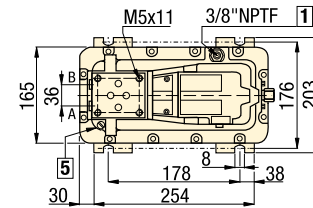


PACG series

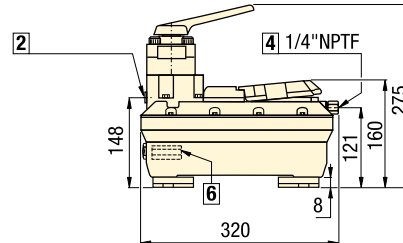
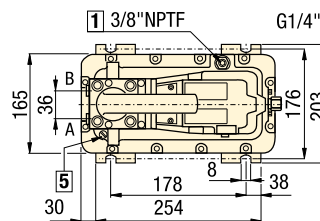


PACG series include pressure gauge G-2517L.

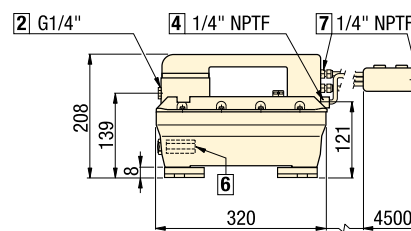
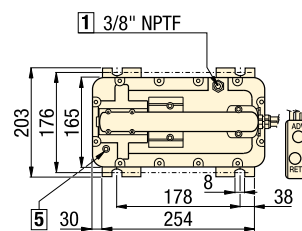
PASG series



PAMG series



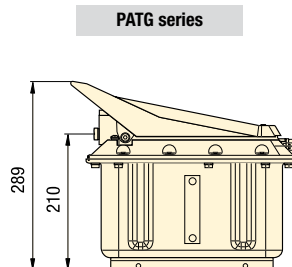
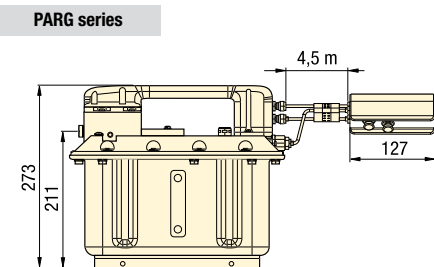
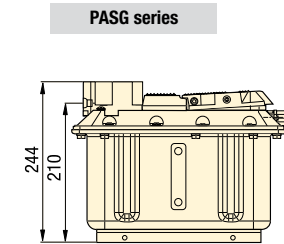
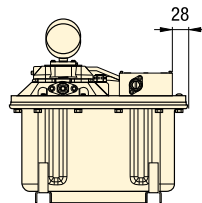
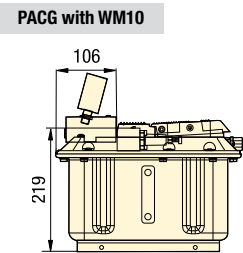
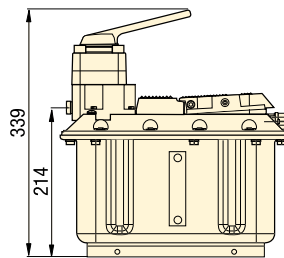
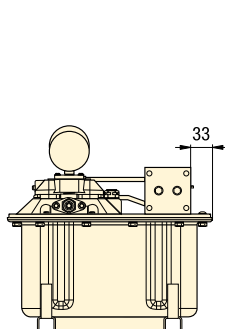
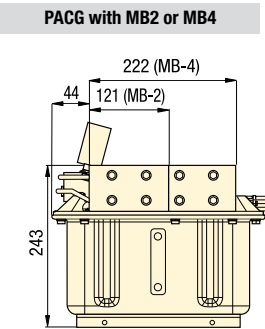
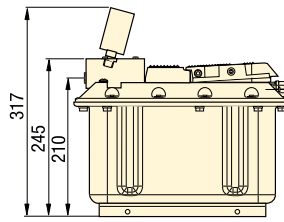
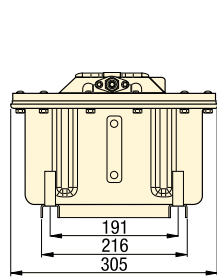
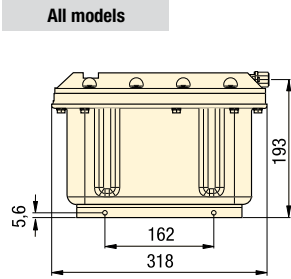
PARG series



¹⁾ At 0 bar hydraulic and 7 bar air pressure.

²⁾ Turbo air-hydraulic pumps are also available with 5,0 litres reservoir. To order replace 2 in model number with 5. Sound level: 75 dBA.

 **7,5 litres reservoir** (dimensions in mm)



- Oil Flow: 0,08 - 2,46 l/min**
- Pressure: 350 bar**
- Air: 340 l/min**
- Reservoir: 1,9 - 7,5 litres**


- E Bombas hidroneumáticas**
- F Pompes hydro-pneumatiques**
- D Lufthydraulische pumpen**

 **Options**


Gauges and accessories

 [190](#)

Regulator-filter-lubricator

 [106,158](#)

 **Product selection**

Description	Model numbers 3000 series	Model numbers 5000 series	Usable oil capacity	Air pressure range	Air consumption	
	2,46 l/min ¹⁾	1,64 l/min ¹⁾	litres	bar	l/min	kg
▼ Factory supplied valves						
Hand/foot 3-way	PATG-31S8N	PATG-51S8N	7,5	1,7 - 8,6	340	24,5
Hand 4-way	PAMG-34S8N	PAMG-54S8N	7,5	1,7 - 8,6	340	27,2
Remote 3-way pendant	PARG-31S8N	PARG-51S8N	7,5	1,7 - 8,6	340	26,3
▼ User supplied valves						
Remote mount	PACG-30S8S	PACG-50S8S	7,5	1,7 - 8,6	340	24,5
Pump mount, Single D03 Valve	PASG-30S8S	PASG-50S8S	7,5	1,7 - 8,6	340	24,5
Pump mount, Two D03 Valves	PACG-30S8S-MB2	PACG-50S8S-MB2	7,5	1,7 - 8,6	340	26,3
Pump mount, Four D03 Valves	PACG-30S8S-MB4	PACG-50S8S-MB4	7,5	1,7 - 8,6	340	27,6
Pump mount, (1-8) VP Valves	PACG-30S8S-WM10	PACG-50S8S-WM10	7,5	1,7 - 8,6	340	25,4

¹⁾ At 0 bar hydraulic and 7 bar air pressure. Sound level: 75 dBA.