

Shown: PRV-1



PRV series

These valves regulate system pressure for all subsequent valves, according to the adjusted pressure. Maintains a constant pressure in a secondary circuit. Includes a check valve that prevents pressure drop on secondary side.

Application

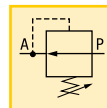
Used when a hydraulic supply with a higher pressure (primary side) must also be used for another circuit with a lower pressure (secondary circuit). PRV-1 can be stack built between VP-series valves.

Precise control of hydraulic pressure




- Stackbuilding with VP series modular valves
- Stackable for multiple pressures on one valve stack assembly
- Tool adjustable knob can be locked
- Precise control of pressure

Pressure: 350 bar
Flow: 7 l/min

- Ⓔ Válv. reguladora de presión
- Ⓕ Valve de pression réglable
- Ⓓ Druckreduzierventil



Options

- VP-series Modular valves  136 ▶
- Pressure switches  188 ▶
- TRK-series Tie rod kits  139 ▶

Collet-Lok® products

Swing clamps

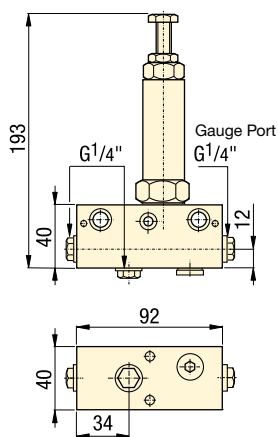
Work Supports

Linear Cylinders

Power Sources

Valves

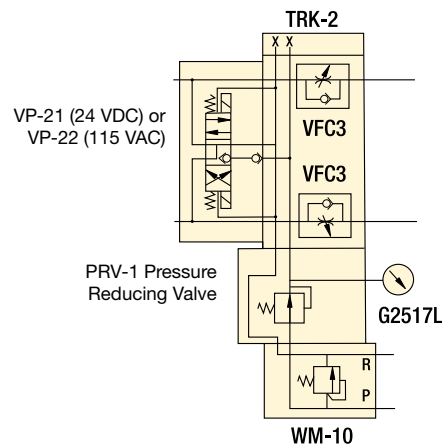
PRV-1, PRV-5



▼ PRV-1 connected with remote manifold WM-10.



Valve stacking example



Product selection

Mounting style	Adjustable pressure range	Maximum pressure	Model number	Oil ports	Maximum oil flow	
	bar	bar		BSP	l/min	kg
VP-series	30 - 300	350	PRV-1	G1/4"	7	1,6
VP-series	75 - 138	350	PRV-5	G1/4"	7	1,6